

Specification of Standard Furnished Exhibition Spaces

Mini package



Includes:

- 1 table 2 × 1 m (dressed in a vortex)
- 2× cushioned chair

6 m² of Standard Furnished Exhibition Space



Octanorm Equipment

Includes:

- partitions (H: 250 cm)
- ceiling connection
- exhibition floor covering 6 m²
- counter (W×H×D: 100×98×50 cm)
- sign plate (W×H: 200×40 cm)
- bar stool



Wooden Box Equipment

Includes:

- wooden box partitions
- exhibition floor covering 6 m²
- wooden box counter
- bar stool

9 m² of Standard Furnished Exhibition Space



Octanorm Equipment

Includes:

- partitions (H: 250 cm)
- ceiling connection
- exhibition floor covering 6 m²
- counter (W×H×D: 100×98×50 cm)
- table (W×H: 140×60 cm)
- 4 cushioned chairs
- sign plate (W×H: 200×40 cm)
- bar stool



Wooden Box Equipment

Includes:

- wooden box partitions
- exhibition floor covering 9 m²
- wooden box counter
- 4 cushioned chairs
- sign plate (W×H: 200×40 cm)
- bar stool

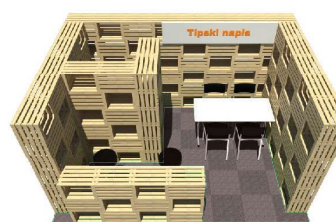
12 m² of Standard Furnished Exhibition Space



Octanorm Equipment

Includes:

- partitions (H: 250 cm)
- ceiling connection
- exhibition floor covering 12 m²
- 2 counters (W×H×D: 100×98×50 cm)
- closed storage unit
- door
- table (W×H: 140×60 cm)
- 4 cushioned chairs
- sign plate (W×H: 200×40 cm)
- 2 bar stools



Wooden Box Equipment

Includes:

- wooden box partitions
- exhibition floor covering 12 m²
- 2 wooden box counters
- open storage unit
- 4 cushioned chair
- sign plate (W×H: 200×40 cm)
- bar stool

It is not possible to exchange any elements of the standard furnished exhibition space set. Number of open sides (row or corner space) are determined by the Organizer.