

## Specification of Standard Furnished Exhibition Spaces

### 6 sqm of Standard Furnished Exhibition Space



#### Octanorm Equipment

- Includes:
- partitions (H: 250 cm)
  - ceiling connection
  - exhibition floor covering 6 sqm
  - counter (W×H×D: 100×98×50 cm)
  - sign plate (W×H: 200×40 cm)
  - bar stool



#### Wooden Box Equipment

- Includes:
- wooden box partitions
  - exhibition floor covering 6 sqm
  - wooden box counter
  - bar stool

### 9 sqm of Standard Furnished Exhibition Space



#### Octanorm Equipment

- Includes:
- partitions (H: 250 cm)
  - ceiling connection
  - exhibition floor covering 9 sqm
  - counter (W×H×D: 100×98×50 cm)
  - table (W×H: 140×60 cm)
  - 4 cushioned chairs
  - sign plate (W×H: 200×40 cm)
  - bar stool



#### Wooden Box Equipment

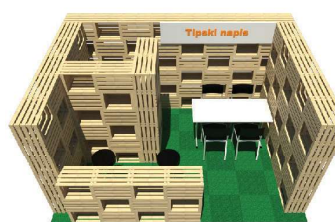
- Includes:
- wooden box partitions
  - exhibition floor covering 9 sqm
  - wooden box counter
  - 4 cushioned chairs
  - sign plate (W×H: 200×40 cm)
  - bar stool

### 12 sqm of Standard Furnished Exhibition Space



#### Octanorm Equipment

- Includes:
- partitions (H: 250 cm)
  - ceiling connection
  - exhibition floor covering 12 sqm
  - 2 counters (W×H×D: 100×98×50 cm)
  - closed storage unit
  - door
  - table (W×H: 140×60 cm)
  - 4 cushioned chairs
  - sign plate (W×H: 200×40 cm)
  - 2 bar stools



#### Wooden Box Equipment

- Includes:
- wooden box partitions
  - exhibition floor covering 12 sqm
  - 2 wooden box counters
  - open storage unit
  - 4 cushioned chair
  - sign plate (W×H: 200×40 cm)
  - bar stool

It is not possible to exchange any elements of the standard furnished exhibition space set. Number of open sides (row or corner space) are determined by the Organizer.